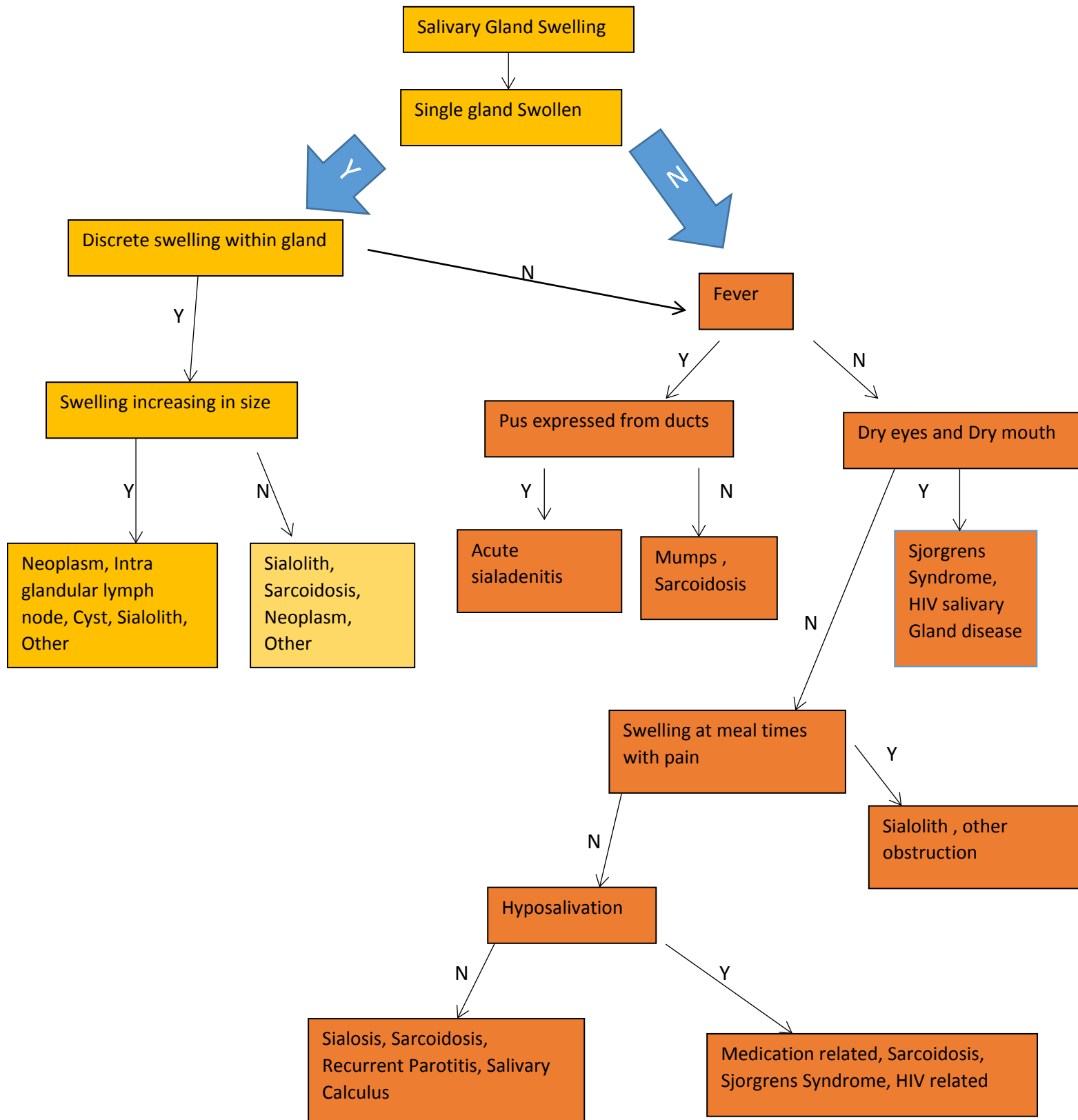


**Salivary Gland Conditions****Differential diagnosis of salivary Gland Swelling:**

**Special tests for salivary gland dysfunction:**

1. Blood Tests- Sjogrens Syndrome, Inflammation
2. CT Scan- Salivary Calculi, Space occupying lesion
3. MRI Scan- Space occupying lesion
4. Salivary Gland Biopsy- Labial gland ( Sarcodosis, Sjogrens), FNA- Abnormal cells
5. Sialography- Calculi, Sjogrens
6. Sialometry- Salivary flow
7. Scintigraphy- tumour, obstruction
8. Ultrasound- Being used more

**Summary of causes of dry mouth:**

1. Iatrogenic- Drugs, Procedures ( Irradiation, Chemotherapy, Bone marrow Transplant, Graft v Host)
2. Inflammatory- Sjogrens syndrome, Sarcodosis
3. Infective- HCV, HIV, HTLV-1 \*
4. Others- Amyloidosis, Cystic fibrosis, Ectodermal dysplasia, Salivary gland aplasia
5. Dehydration- Kidney disease, Diabetes, Diarrhoea, Hyperthyroid, Severe haemorrhage
6. Psychogenic- Anxiety, Bulimia nervosa, Depression, Hypochondriasis\*\*

\*- Human T-Lymphotropic Virus causes an adult T-cell leukaemia/lymphoma like disease

\*\* - Health anxiety , worry about having a serious illness